



QCOMMISSION INTEGRATION WITH SQL SERVER

www.qcommission.com

Overview

Sales commission programs are possibly the most variable programs conducted by a firm. These programs tend to vary significantly from industry to industry, and many times within companies in an industry. Sales commission programs tend to be different by employees even within a single firm. Because of the highly variable nature of commission calculations, solutions attempting to solve the problem must be highly sophisticated. At the same time, they should not burden the user with additional complexity in their operations. One key area of complexity is allowing data interchange between the customer's existing accounting systems and the commissions system. A commission system that can understand the structure of the accounting system data and seamlessly bring in the appropriate data necessary for calculating commissions can be a huge benefit in reducing the inherent complexity in that process.

A sales commission solution that can accurately establish and calculate commissions and can seamlessly provide the sales commission statements for viewing by sales people can be a great advantage to firms. In addition to reducing commission errors, reducing time taken to administer and increasing sales people productivity, the solution can increase SugarCRM adoptions.

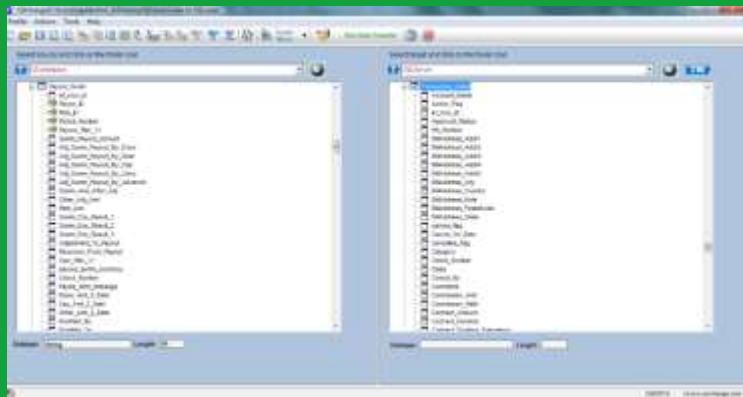
QCommission is a powerful, flexible sales commission software tool. It calculates sales people's compensation accurately, quickly and professionally. QCommission is integrated with QuickBooks® but can also be operated stand- alone.

SQL Server is a massive database containing information of various systems of several organizations. MySQL Server is easy accessible and usable for many companies.

Technology

The Object Linking and Embedding Database (OLEDB) Interface provides an interface for data manipulation in the SQL Server database. The OLEDB Interface is a set of development tools that enable SQL Server to integrate external solutions with SQL Server. The OLEDB Interface can be used to access the database, to extend its functionality, to link with third-party solutions, and to adapt the functionality of SQL Server to fit customers' needs.

CellarStone provides QXchange, a sophisticated integration tool to map QuickBooks® data to QCommission.



Importing Data

Commission imports the data in the databases of SQL Server at a faster rate. Facilitates data filtering and formatting according to requirement and enables precise view of the data before filtering process. Enables easy and prioritized maintenance of databases.

Exporting Data

QCommission enables effective transfer of the data to the databases of SQL Server. Facilitates precise view of the data after filtering process. The System also facilities data size validations before initiating the export.

Conclusion

QCommission does a tremendous job, understanding the intricacies of the SQL Server data structure as well as the complications inherent in the data integration process. With this ability it integrates the two systems in such a manner that the complexity to the customer is reduced to a minimal level.